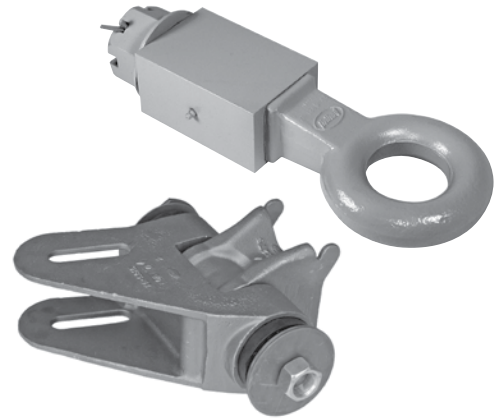


## DRAWBAR EYES & HINGE ASSEMBLY



- Compatibility Chart
- Rigid Mount – Bolt-On/Weld-On
- Air Cushioned
- Swivel Mount
- Drawbar Hinge Assembly

# Drawbar Eye Compatibility



SAF-HOLLAND Group

DRAWBAR NUMBER	NON-ROAD IND/GSE USE ONLY		R	R	R	R	R	R	R	R	R	R
	DB-010E1	DB-020FK1	DB-1250-3	DB-1228-1	DB-1238	DB-030DQ1	DB-1235-1	DB-1235-3	DB-040DQ1	DB-1245-1	DB-1249-49	
Max Vertical Load	2,000	4,000	3,000	4,000	4,500	6,000	7,000	7,000	8,000	8,000	9,000	
GTW	10,000	20,000	15,000	20,000	22,000	30,000	35,000	35,000	40,000	40,000	45,000	
GTW w/500 lbs. Vertical	20,000	40,000	50,000	60,000	70,000	38,000	90,000	90,000	60,000	90,000	85,000	
Eye I.D. Diameter	2.5"	3"	2.5"	2.5"	3"	2.5"	3"	3"	2.5"	2.38"	3"	
<b>PINTLE HOOK MODEL MAX GTW</b>												
PH-10RP	R	10,000	X	X	X	X	X	X	X	X	X	X
BH-200RN	R	20,000	X	X	X	X	X	X	X	X	X	X
BH-50mmRN	R	20,000	X	X	X	X	X	X	X	X	X	X
PH-T-60-AOS-L-8	S	18,000	X	X	X	X	X	X	X	X	X	X
PH-T-60-AOL-8	R	30,000	X	X	X	X	X	X	X	X	X	X
PH-30RP	R	30,000	X	X	X	X	X	X	X	X	X	X
PH-30SA	S	30,000	X	X	X	X	X	X	X	X	X	X
PH-30SB	S	30,000	X	X	X	X	X	X	X	X	X	X
PH-300 / 300-R	R	72,000	X	X	X	X	X	X	X	X	X	X
PH-210	R	90,000	X	X	X	X	X	X	X	X	X	X
PH-310	R	100,000	X	X	X	X	X	X	X	X	X	X
PH-400 / 400-H	R	100,000	X	X	X	X	X	X	X	X	X	X
PH-405	R	100,000	X	X	X	X	X	X	X	X	X	X
PH-410	R	100,000	X	X	X	X	X	X	X	X	X	X
PH-419	R	100,000	O	X	O	O	X	O	X	O	O	X
PH-550	R	100,000	X	X	X	X	X	X	X	X	X	X
PH-760	S	49,000	O	O	O	O	X	O	X	O	O	X
PH-775	S	100,000	O	O	O	O	X	O	X	O	O	X
<b>COUPLER MODEL</b>												
CP-400-H	R	30,000	X	X	X	X	X	X	X	X	X	X
CP-360	R	52,000	X	X	X	X	X	X	X	X	O	X
CP-730	S	100,000	O	O	O	O	O	O	X	X	O	O
CP-740	R	100,000	O	O	O	O	O	O	X	X	O	O
PH-990ST71	S	100,000	O	O	O	O	O	O	X	X	O	O
<b>INDUSTRIAL / AVIATION GROUND SUPPORT EQUIPMENT (Non-Road)</b>												
CP-400-GSE / CA	R	30,000	X	X	X	X	X	X	X	X	X	X
EH-3050	R	50,000	X	X	X	X	X	X	X	X	X	X
EH-HD	R	50,000	X	X	X	X	X	X	X	X	X	X

R = RIGID            X = COMPATIBLE  
S = SWIVEL         O = NOT COMPATIBLE

This information reflects only the dimensional compatibility between HOLLAND lunettes (eyes) and HOLLAND pintle hook horns, coupler jaws and clevis pins.

This information is not an assurance of operational or application compatibility between coupling products. Compatibility of the complete 'coupling system' requires additional information.

Please go to the Reference Sections of this catalog (page 61) for helpful information, including:

- Safety Information
- Coupling System Selection
- Operating Conditions
- Mounting Information



	S	S	R	S	S				R	R	R	R
DB-045BS1	DB-045BW1	DB-610-30	DB-060FQ1	DB-1407-S	DB-1407-SE	DB-1407-L-1	DB-1407-S-1	DB-1407-SE-1	DB-1400	DB-1400AC	DB-1422	DB-100FQ1
9,000	9,000	9,000	15,000	500	500	16,000	16,000	16,000	18,000	18,000	18,000	20,000
45,000	45,000	45,000	60,000	40,000	34,000	85,000	85,000	85,000	90,000	90,000	90,000	100,000
85,000	85,000	85,000	90,000	40,000	34,000	120,000	120,000	120,000	120,000	120,000	120,000	125,000
2.38"	2.38"	3"	3"	2.38"	2.38"	2.38"	2.38"	2.38"	2.38"	2.38"	2.38"	3"
PINTLE HOOK MODEL MAX GTW												
X	X	X	X	X	X	X	X	X	X	X	X	X
X	X	X	X	X	X	X	X	X	X	X	X	X
X	X	X	X	X	X	X	X	X	X	X	X	X
X	O	O	X	O	O	X	X	X	X	X	X	X
X	X	X	X	X	X	X	X	X	X	X	X	X
X	X	X	X	X	X	X	X	X	X	X	X	X
X	O	O	X	O	O	X	X	X	X	X	X	X
X	O	O	X	O	O	X	X	X	X	X	X	X
X	X	X	X	X	X	X	X	X	X	X	X	X
X	X	X	X	X	X	X	X	X	X	X	X	X
X	X	X	X	X	X	X	X	X	X	X	X	X
X	X	X	X	X	X	X	X	X	X	X	X	X
X	X	X	X	X	X	X	X	X	X	X	X	X
X	X	X	X	X	X	X	X	X	X	X	X	X
O	O	X	X	O	O	O	O	O	O	O	O	X
X	X	X	X	X	X	X	X	X	X	X	X	X
O	O	O	X	O	O	O	O	O	O	O	O	X
O	O	O	X	O	O	O	O	O	O	O	O	X
COUPLER MODEL												
X	X	X	X	X	X	X	X	X	X	X	X	X
O	O	X	X	O	O	O	O	O	O	O	O	X
O	O	X	O	O	O	O	O	O	O	O	O	O
O	O	X	O	O	O	O	O	O	O	O	O	O
O	O	O	O	O	O	O	O	O	O	O	O	O
INDUSTRIAL / AVIATION GROUND SUPPORT EQUIPMENT (Non-Road)												
X	X	X	X	X	X	X	X	X	X	X	X	X
X	X	X	X	X	X	X	X	X	X	X	X	X
X	X	X	X	X	X	X	X	X	X	X	X	X

R = RIGID            X = COMPATIBLE  
 S = SWIVEL        O = NOT COMPATIBLE

This information reflects only the dimensional compatibility between HOLLAND lunettes (eyes) and HOLLAND pintle hook horns, coupler jaws and clevis pins.

This information is not an assurance of operational or application compatibility between coupling products. Compatibility of the complete 'coupling system' requires additional information.

Please go to the Reference Sections of this catalog (page 61) for helpful information, including:

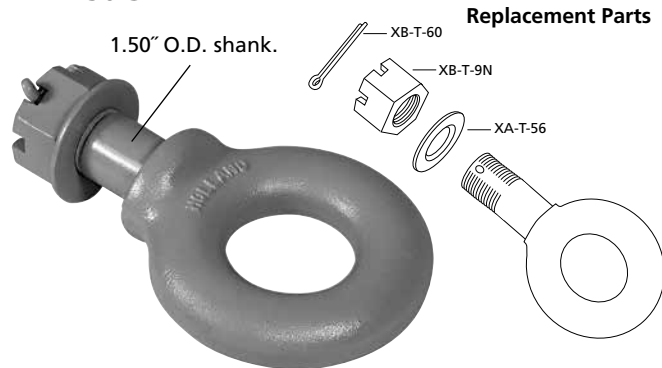
- Safety Information
- Coupling System Selection
- Operating Conditions
- Mounting Information

# Drawbar Eyes – Rigid Mount, Bolt-On Shank

## DB-1250-3

- Forged, one-piece steel alloy drawbar
- Heat treated for strength
- I.D. of eye is induction hardened for wear resistance
- Tested in accordance with SAE J847

## DB-1250-3



		Rigid Tongue Trailers		Hinged Tongue Trailers			
				500 lb. Max. Vertical Load		Weight	
Capacities		lb.	kg	lb.	kg	lb.	kg
<b>DB-1250-3</b>	GTW	15,000	6,804	50,000	22,680	9	4
2.5" (63.5mm) Eye	VERTICAL	3,000	1,361	500	227		

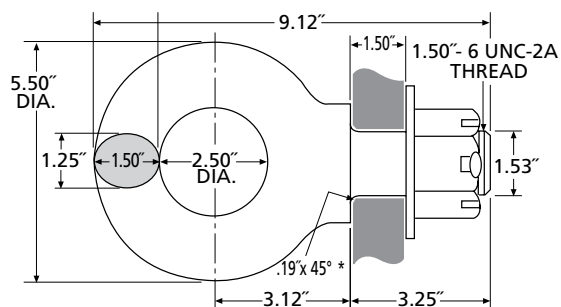
## Additional Information

- Not recommended for swivel mount applications.
- When mounted, high clamp force is required to provide rated capacities.
- For off-road\* applications, reduce published capacities by 25% and use with swivel-mount coupling.
- For additional specifications, refer to document XL-DB104.

\* See definition on page 66

## Mounting Dimensions

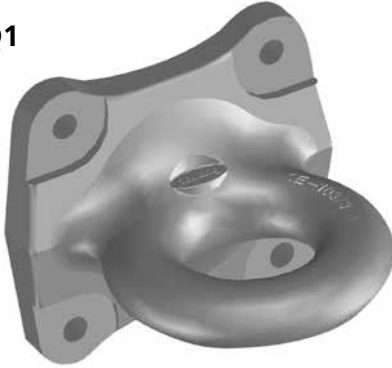
### DB-1250-3



## DB-040DQ1, DB-060FQ1 and DB-100FQ1

- Forged, one-piece steel alloy drawbar
- Heat treated for strength
- I.D. of eye is induction hardened for wear resistance
- Tested in accordance with SAE J847

**DB-040DQ1**



**DB-060FQ1  
DB-100FQ1**



		Rigid Tongue Trailers		Hinged Tongue Trailers		Dim. 'A'	Grade 8 Fastener Size	Weight	
Capacities		lb.	kg	500 lb. Max. Vertical Load				lb.	kg
<b>DB-040DQ1</b>	GTW	40,000	18,144	60,000	27,216	0.656"	5/8"	14	6.4
	2.5" (63.3mm) Eye VERTICAL	8,000	3,629	500	227				
<b>DB-060FQ1</b>	GTW	60,000	27,216	90,000	40,824	0.780"	3/4"	19	8.6
	3" (76.2mm) Eye VERTICAL	15,000	6,804	500	227				
<b>DB-100FQ1</b>	GTW	100,000	45,360	125,000	56,700	0.910	7/8"	19	8.6
	3" (76.2mm) Eye VERTICAL	20,000	9,072	500	227				

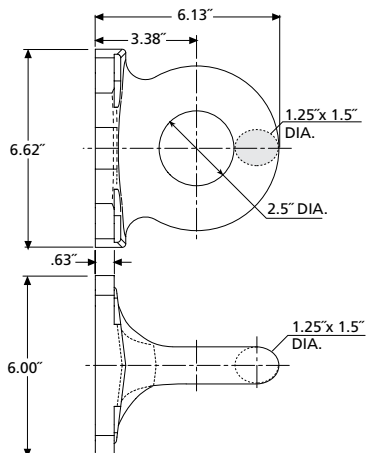
### Additional Information

- **IMPORTANT – DO NOT WELD** – Not designed for welded installation.
- Use only new Grade 8 bolts and Grade C locknuts
- For off-road\* applications, reduce published capacities by 25% and use with swivel-mount coupling.
- For additional specifications, refer to documents XL-DB126 and XL-DB125.

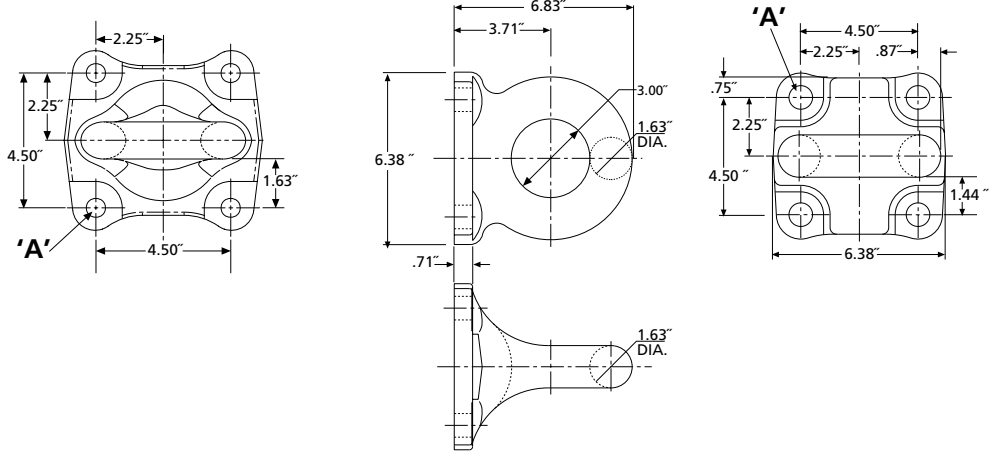
\* See definition on page 66

### Mounting Dimensions

**DB-040DQ1**

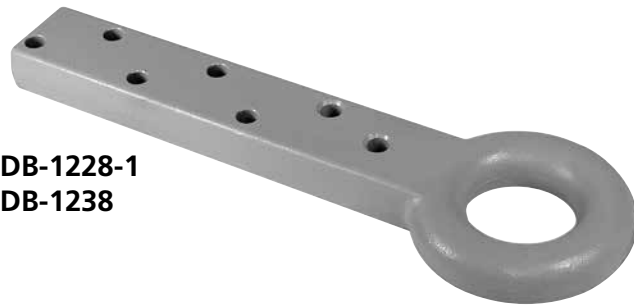


**DB-060FQ1 & DB100FQ1**



## DB-1228-1, DB-1238, DB-1245-1, DB-1235-1 & DB-1235-3

- Forged, one-piece steel alloy drawbars
- Heat treated for strength
- I.D. of eye is induction hardened for wear resistance.
- Tested in accordance with SAE J847.



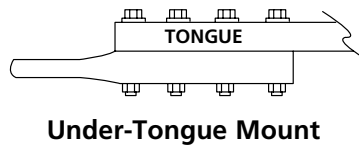
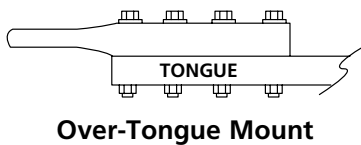
**DB-1228-1  
DB-1238**



**DB-1245-1  
DB-1235-1  
DB-1235-3**

### Rigid Tongue Trailers

SAF-HOLLAND testing confirms that the type of drawbar mount for a rigid tongue trailer can affect the vertical load capacity of the tongue/drawbar assembly due to the bolt loads associated with the particular mounting type (reference chart below).



Vertical rating may be increased by 50% from over-tongue mount.

### Hinged Tongue Trailers

When used in hinged tongue trailer applications where maximum vertical load cannot exceed 500 lbs. (227 kg).

Hinged tongue capacities are not affected by over/under-tongue mounting.

	Rigid Tongue Trailers						Hinged Tongue Trailers		
	Capacities	lb.	kg	Capacities	lb.	kg	Capacities	lb.	kg
<b>DB-1228-1</b> 2.5" ID (63.5mm) Eye	GTW VERTICAL	20,000 4,000	9,072 1,814	GTW VERTICAL	20,000 6,000	9,072 2,722	GTW VERTICAL	60,000 500	27,216 227
<b>DB-1238</b> 3" ID (76.2mm) Eye	GTW VERTICAL	22,000 4,500	9,979 2,041	GTW VERTICAL	22,000 6,750	9,979 3,062	GTW VERTICAL	70,000 500	31,752 227
<b>DB-1245-1</b> 2.38" ID (60.5 mm) Eye	GTW VERTICAL	40,000 8,000	18,144 3,629	GTW VERTICAL	40,000 12,000	18,144 5,433	GTW VERTICAL	90,000 500	40,824 227
<b>DB-1235-3</b> 3" ID (76.2mm) Eye	GTW VERTICAL	35,000 7,000	15,876 3,175	GTW VERTICAL	35,000 10,500	15,875 4,763	GTW VERTICAL	90,000 500	40,824 227
<b>DB-1235-1</b> 3" ID (76.2mm) Eye	GTW VERTICAL	35,000 7,000	15,876 3,175	GTW VERTICAL	35,000 10,500	15,876 4,763	GTW VERTICAL	90,000 500	40,824 227

### Additional Information

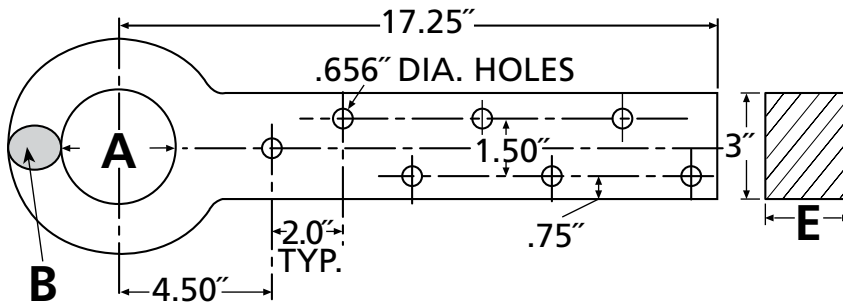
- SAF-HOLLAND recommends that all bolt holes be used.
- Use only Grade 8 bolts and Grade C locknuts.
- **IMPORTANT – DO NOT WELD** – Not designed for welded installation.
- For off-road\* applications, reduce published capacities by 25% and use with swivel-mount coupling.
- For additional specifications, refer to document XL-DB101.

\* See definition on page 66

## Mounting Dimensions

DB-1228-1

DB-1238



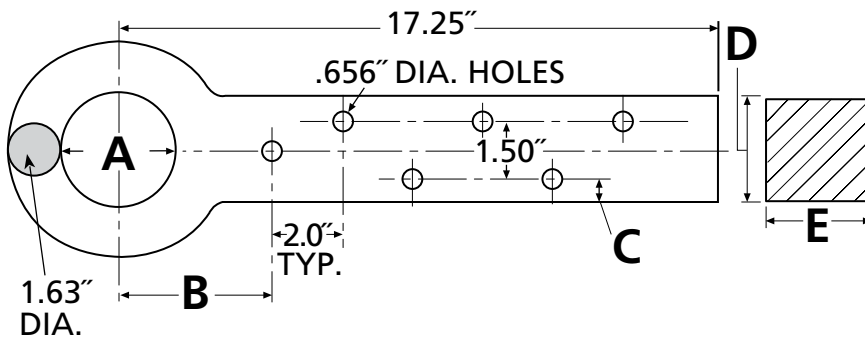
	Dimensions			Weight	
	A	B	E	lb.	kg
DB-1228-1	2.50"	1.25" x 1.50" Oval	1.25	20	9.1
DB-1238	3.0"	1.63" Round	1.62"	26	11.8

## Mounting Dimensions

DB-1245-1

DB-1235-1

DB-1235-3



	Dimensions					Weight	
	A	B	C	D	E	lb.	kg
DB-1245-1	2.38"	6.0"	0.75"	3.0"	3.0"	41	18.6
DB-1235-3	3.0"	6.5"	0.75"	3.0"	3.0"	41	18.6
DB-1235-1	3.0"	6.0"	0.82"	3.12"	3.12"	42	19.1



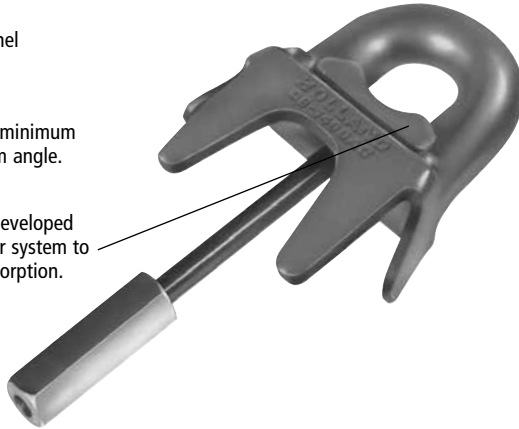
## DB-1400AC Series: DB-1400AC-1, DB-1400AC-2, DB-1400AC-3, DB-1400AC-4

- Forged, one-piece steel alloy drawbar
- I.D. of eye is induction hardened for wear resistance
- Tested in accordance with SAE J847

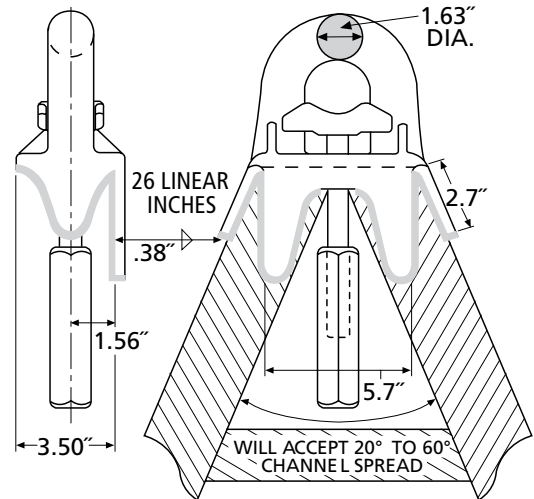
Use with 3" channel or square tubing.

Designed for 20° minimum and 60° maximum angle.

Snubber force is developed by the vehicle's air system to provide shock absorption.



### Mounting Dimensions



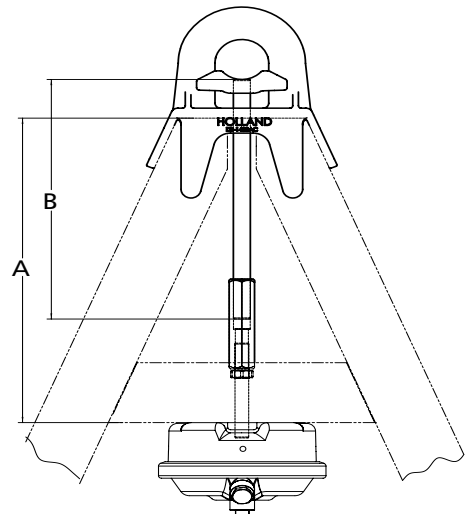
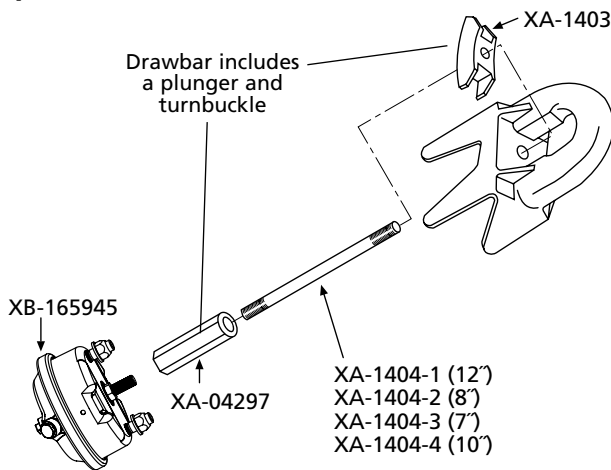
		Rigid Tongue Trailers		Hinged Tongue Trailers		Weight	
				500 lb. Max. Vertical Load			
Capacities		lb.	kg	lb.	kg	lb.	kg
DB-1400AC 2.38" (60.5mm) Eye	GTW	90,000	40,824	120,000	54,432	14	6.4
	VERTICAL	18,000	8,165	500	227		

### Additional Information

- For off-road\* applications, reduce the published capacities by 25% and use with a swivel-mount coupling.
- For additional specifications, refer to document XL-DB114.

\* See definition on page 66

### Replacement Parts



**A** = Distance required to mount air chamber  
**B** = Rod length

MODEL*	DIM "A"	DIM "B"
DB-1400AC-1	15.25"	12.00"
DB-1400AC-2	11.25"	8.00"
DB-1400AC-3	10.25"	7.00"
DB-1400AC-4	13.25"	10.00"

\*Air cylinder is NOT included; order separately.

# Drawbar Eyes – Swivel Mount, Bolt-On Shank



SAF-HOLLAND Group

## DB-1407

- Forged, one-piece steel alloy drawbar
- Heat treated for strength
- I.D. of eye is induction hardened for wear resistance
- Tested in accordance with SAE J847



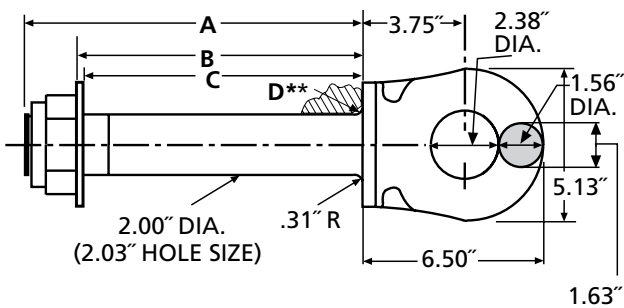
	Rigid Tongue Trailers			Hinged Tongue Trailers		
	Capacities	lb.	kg	500 lb. Max. Vertical Load		
<b>DB-1407-L-1/-S-1/-SE-1</b>	GTW	85,000	38,556	GTW	120,000	54,432
2.38" (60.5mm) Eye	VERTICAL	16,000	7,258	VERTICAL	500	227

### Additional Information

- For off-road\* applications, reduce the published capacities by 25% and use with a rigid-mount coupling.
- For additional specifications, refer to document XL-DB117.

\* See definition on page 66

### Mounting Dimensions

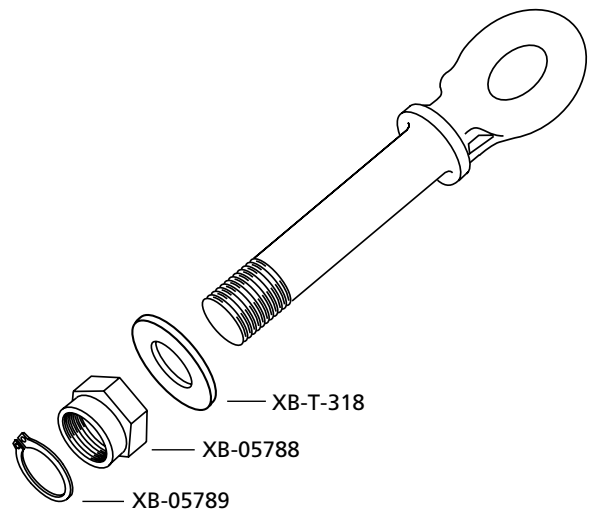


MODEL NO.	A	B	C	**CHAMFER D	WEIGHT	
					lb.	kg
<b>DB-1407-S-1*</b>	11.62"	9.4"	9.3"	.38" x 45°	24	10.9
<b>DB-1407-L-1*</b>	12.25"	10.1"	9.9"	.38" x 45°	25	11.3
<b>DB-1407-SE-1*</b>	13.13"	10.9"	10.8"	.38" x 45°	26	11.8

\* Includes drawbar washer, nut and retaining ring.

\*\* The mounting surface must have adequate chamfer, as shown above, so that the drawbar mounts flush with the mounting surface.

### Replacement Parts



## DB-1407-SE and DB-1407-S Weld-On Assemblies

- Steel housing features replaceable rubber bushings
- Forged, one-piece steel alloy drawbar
- Heat treated for strength
- I.D. of eye is induction hardened for wear resistance
- Tested in accordance with SAE J847



		Hinged Tongue Trailers		Weight	
		500 lb. Max. Vertical Load			
Capacities		lb.	kg	lb.	kg
<b>DB-1407-SE</b> 2.38" (60.5mm) Eye	GTW	34,000	15,422	50	22.6
	VERTICAL	500	227		
<b>DB-1407-S</b> 2.38" (60.5mm) Eye	GTW	40,000	18,144	45	20.4
	VERTICAL	500	227		

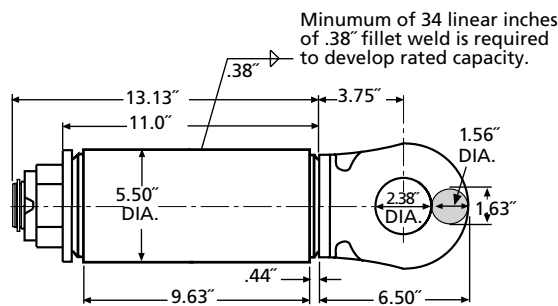
### Additional Information

- Rubber cushioned housings are recommended for hinged tongue trailer applications only.
- For off-road\* applications, reduce the published capacities by 25% and use with a swivel-mount coupling.
- For additional specifications, refer to documents XL-DB119 and 118.

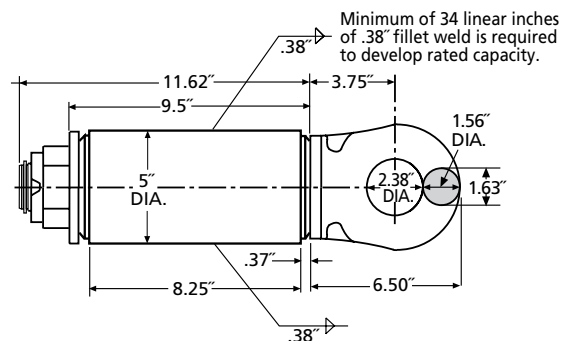
\* See definition on page 71

### Mounting Dimensions

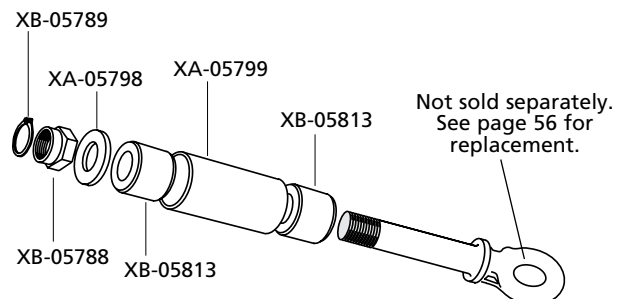
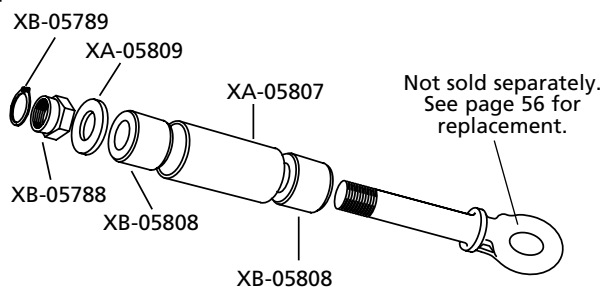
#### DB-1407-SE



#### DB-1407-S



### Replacement Parts



# Drawbar Eyes – Swivel Mount Assembly

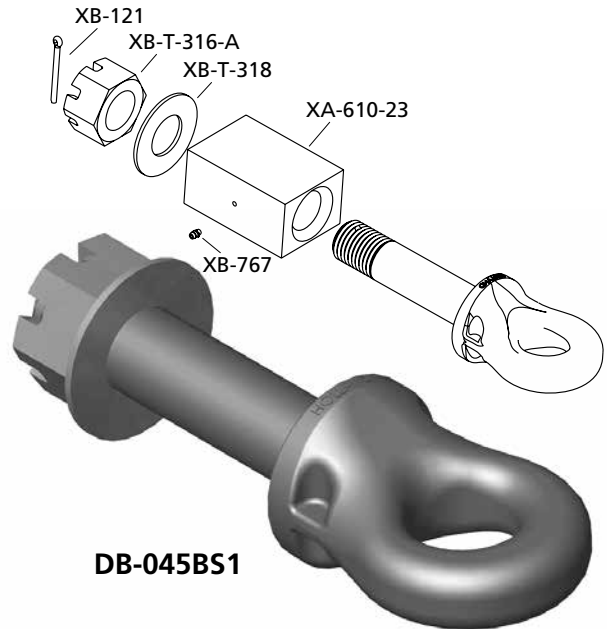
## DB-045BW1 Weld-On Assembly

- Steel block housing features close dimensional tolerances
- Features grease zerk for easy lubrication

## DB-045BS1 Bolt-On

- Forged, one-piece steel alloy drawbar
- Heat treated for strength
- I.D. of eye is induction hardened for wear resistance
- Tested in accordance with SAE J847

## Replacement Parts



DB-045BW1

DB-045BS1

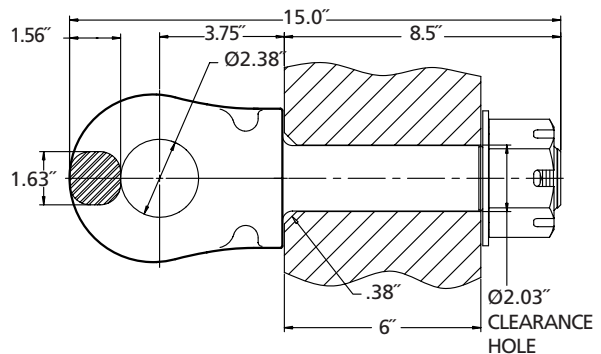
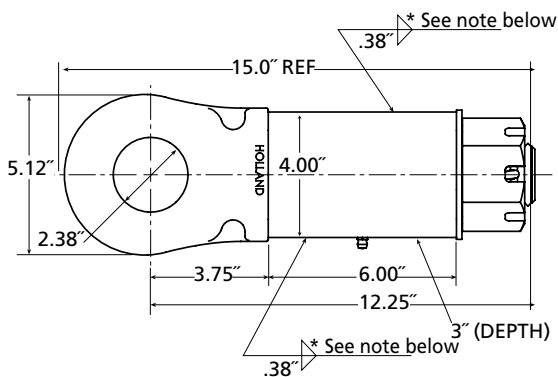
		Rigid Tongue Trailers		Hinged Tongue Trailers			
				500 lb. Max. Vert. Load		Weight	
Capacities		lb.	kg	lb.	kg	lb.	kg
DB-045BW1 Assembly 2.38" (60.5mm) Eye	GTW	45,000	20,412	85,000	38,556	38	17.2
	VERTICAL	9,000	4,082	500	227		
DB-045BS1 Drawbar 2.38" (60.5mm) Eye	GTW	45,000	20,412	85,000	38,556	23	10.4
	VERTICAL	9,000	4,082	500	227		

## Additional Information

- For off-road\* applications, reduce the published capacities by 25% and use with a rigid-mount coupling.
- For additional specifications, refer to document XL-DB131 or XL-DB132.

\* See definition on page 71

## Mounting Dimensions



**\*NOTE:** Minimum of 24 linear inches of .38" fillet weld required to develop rated capacity.

**NOTE:** The mounting surface must have an adequate chamfer, as shown above, so that the drawbar mounts flush with the mounting surface.

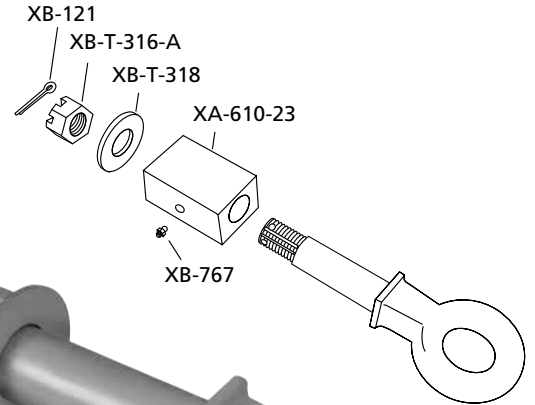
## DB-610-30 Weld-On Assembly

- Steel block housing features close dimensional tolerances
- Features grease zerk for easy lubrication

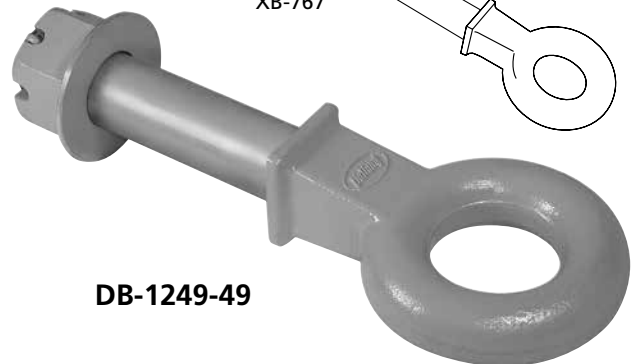
## DB-1249-49 Bolt-On

- Forged, one-piece steel alloy drawbar
- Heat treated for strength
- I.D. of eye is induction hardened for wear resistance
- Tested in accordance with SAE J847

## Replacement Parts



DB-610-30



DB-1249-49

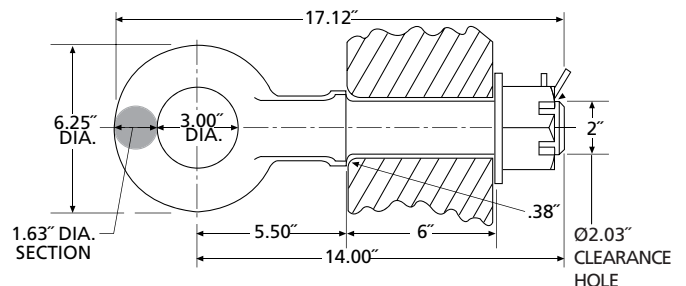
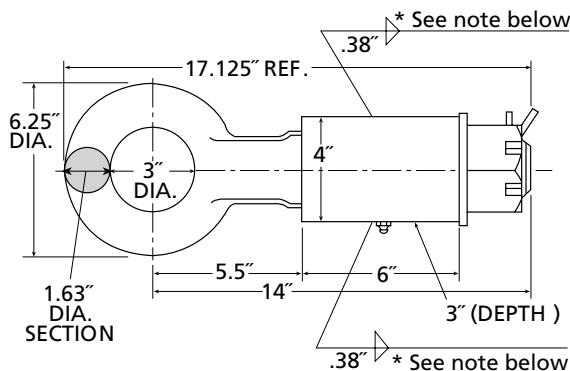
		Rigid Tongue Trailers		Hinged Tongue Trailers		Weight	
				500 lb. Max. Vert. Load			
Capacities		lb.	kg	lb.	kg	lb.	kg
DB-610-30 Assembly 3" (76.2mm) Eye	GTW	45,000	20,412	85,000	38,556	36	16.3
	VERTICAL	9,000	4,082	500	227		
DB-1249-49 Drawbar 3" (76.2mm) Eye	GTW	45,000	20,412	85,000	38,556	24	10.9
	VERTICAL	9,000	4,082	500	227		

## Additional Information

- For off-road\* applications, reduce the published capacities by 25% and use with a rigid-mount coupling.
- For additional specifications, refer to document XL-DB109 or XL-DB106.

\* See definition on page 71

## Mounting Dimensions



**\*NOTE:** Minimum of 24 linear inches of .38\"/>

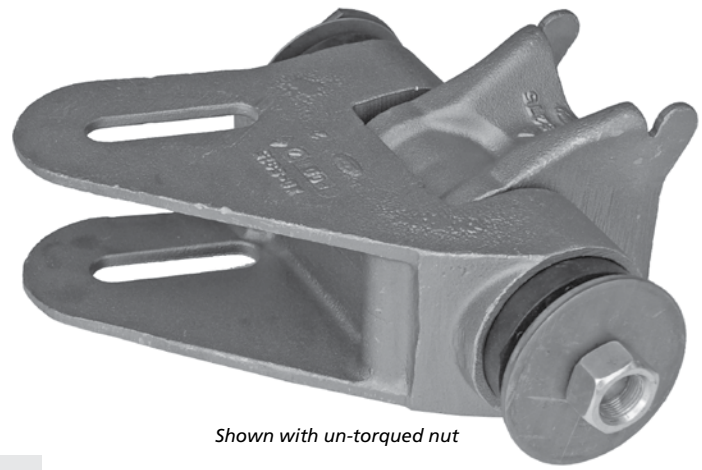
**NOTE:** The mounting surface must have an adequate chamfer, as shown above, so that the drawbar mounts flush with the mounting surface.

## Drawbar Hinge Bracket / Frame Bracket / Equalizer Bushing Assembly

The HOLLAND Drawbar Hinge Assembly provides a simple, proven hinge design for heavy-duty trailers and converter dollies.

The Drawbar Hinge Assembly is used in pairs to provide a 2-point hinge for vertically articulated 'A' frame drawbars used in heavy-duty trailer and dolly applications. The weld-on, cast carbon steel alloy Frame Bracket and Hinge Bracket are sold separately. The brackets feature a symmetrical design which allows installation in either the left-hand or right-hand hinge positions. An Equalizer Bushing Assembly completes the hinge connection between the installed brackets.

Carbon steel alloy castings.



Shown with un-torqued nut

### Capacity (Pair)

100,000 lbs. (45,360 kg) Maximum Gross Trailer Weight

**Complete Assembly Weight (pair): 70.4 lbs. (31.9 kg)**

### XD-5315 Hinge Bracket

#### Accepts

3" (76mm) square tubing or standard channel  
3" x 4" (76mm x 102mm) rectangular tubing or standard channel

#### Weight

15.7 lbs. (7.1 kg)

### XD-5275 Frame Bracket

#### Accepts

4" (102mm) square or rectangular tubing or standard channel

#### Weight

7.5 lbs. (3.4 kg)

### RK-1024 Equalizer Bushing Assembly (Rubber)

#### Bushings

Rubber

#### Weight

12 lbs. (5.4 kg)

### RK-13041 Equalizer Bushing Assembly (Poly)

#### Bushings

Polyurethane

#### Weight

11.7 lbs. (5.3 kg)

### Additional Information

- For off-road\* applications, reduce the above maximum capacities by 25%.

\* See definition on page 66

